

# **ASSIGNMENT TWO**

## **DIGITAL PRESENTATION OF RESEARCH**

**VIKTÓRIA KOSZTOLÁNYIOVÁ 523820**  
**INTERIOR DESIGN 1 APRIL 2020**

# HISTORICAL & CULTURAL CONTEXT



Fig.1 Café Stein Interior

Located in Vienna, a European city famous for its rich architecture Café Stein seems to combine a variety of styles. Judging from the history of Vienna I would assume the building was built in a renaissance style. Due to very little evidence found I could just assume the historical context. The reason I think the architecture of this building belongs to renaissance style is that the building has a square, symmetrical appearance, there are decorative columns visible in the exterior, semi-circular arches in the interior which might be kept from the original design. Interior was probably renovated as the look seems more modern and minimal, no decorations on pillar or wall carvings.



Fig.2 Café Stein Interior



Fig.3 Café Stein Exterior

"Since 1985, Café Stein offers a place for every former and future Viennese student. Being positioned in the ninth Viennese district, our Café is close to the city center and Ringstraße. The nice view of the famous Votivkirche invites many business people, tourists, students and many more to stop by. The mix of Viennese charm and a modern hot spot add up to a cosy retro-chic-style." (Café Stein original website)



# GENERAL SITE ANALYSIS

Throughout exercises 3.1 and 3.2 I was gathering more information about Café Stein, a site I chose in Part 1 ( for more information about the chosen site go to Part 1). I was focusing on a general analysis of the building, materials used in the interior and historical & cultural context. Photos and sketches show a big part of a process I went through during these exercises and picture all the important information I gathered. Café Stein is a cafeteria in the city centre of Vienna, It consists of 4 floors with 2 entrances on the ground floor (Fig.9). The windows are oriented on southwest and southeast with plenty of direct sunlight which makes the cafeteria very bright during the day and provides ideal workspace. (Fig.5) The café is surrounded by a beautiful Votiv Church, Sigmund Freud park and many more cafés, bars and restaurants like AIDA or Café Francais. (Fig.4 & Fig.7). One could almost wonder why are there so many cafeterias and restaurants but with the location near the University of Vienna, Café Stein and other cafés are almost always crowded by students.

Fig.5 Café Stein Sun Path, sketch

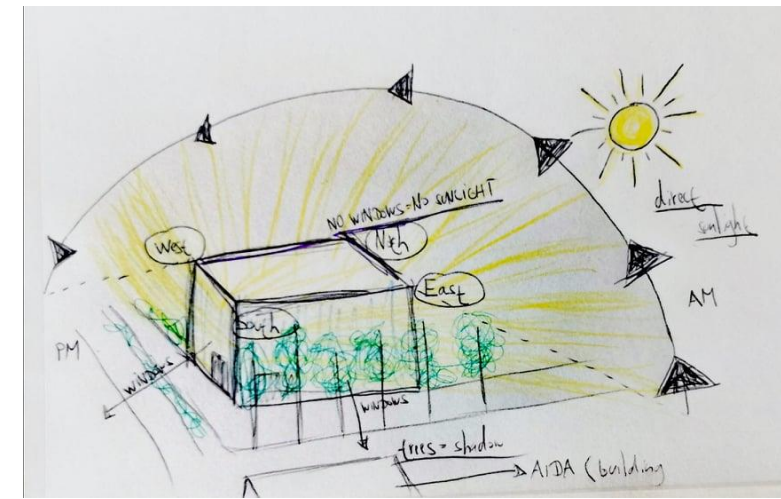


Fig.7 Geographic Location Café Stein, sketch

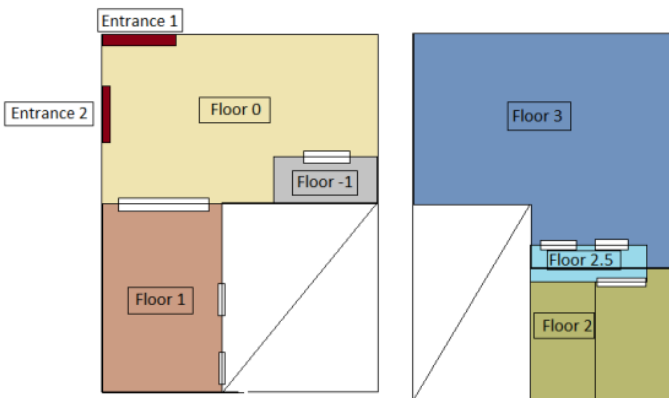
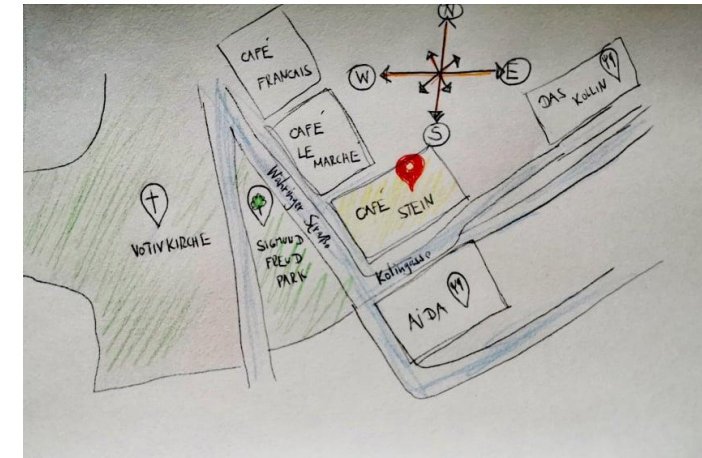


Fig.6 Café Stein Entrance Locations and Types

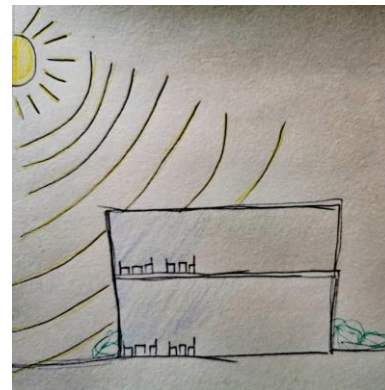


Fig.8 Café Stein, Sun Path, rough sketch

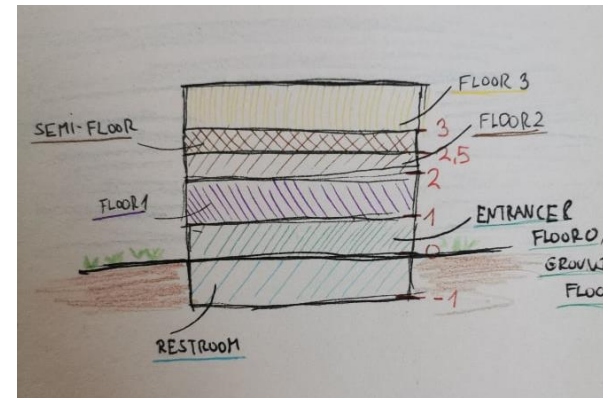


Fig.9 Café Stein, floors sketch

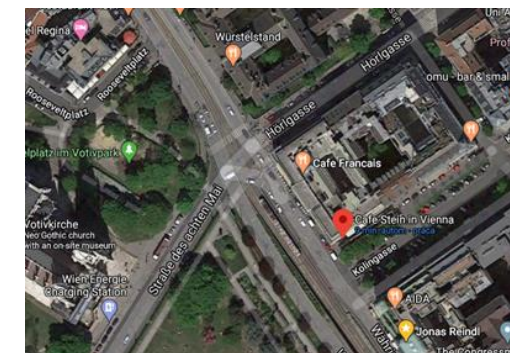


Fig.4 Location of Café Stein, Google Maps

# MATERIALS IN THE INTERIOR

While observing my chosen interior I noticed a large variety of materials. The most dominant are the yellow chairs, I suppose made of artificial leather at the sitting and back part of the chair and steel construction (Fig.11). At the bottom part touching the ground they have small blocks made of hard gum to prevent unwanted sounds while moving the chairs. Tables are made out of dark melamine with wood-like texture and the construction is steel just like the one on the chairs. (Fig.10) The glass walls are dividing some parts, some of the glass in glossy other is more matte with writing on it. (Fig.14) One very outstanding colour in this interior is the red, found on the round stairs. At the end of the stairs, we can find hard black gum to prevent damage to the stone stairs. (Fig.13) Around the windows and pillars, we can find blue artificial leather soft panels that again effectively protect the walls from damage and decorate the space. (Fig.12) All these contribute to creating a cosy feeling across space where the details decorate the interior but also increase its functionality.

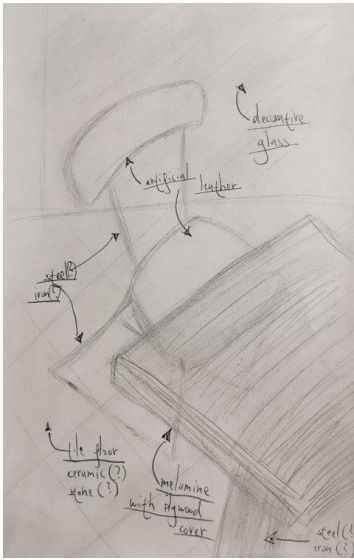


Fig.15 Analysing Materials in Café Stein

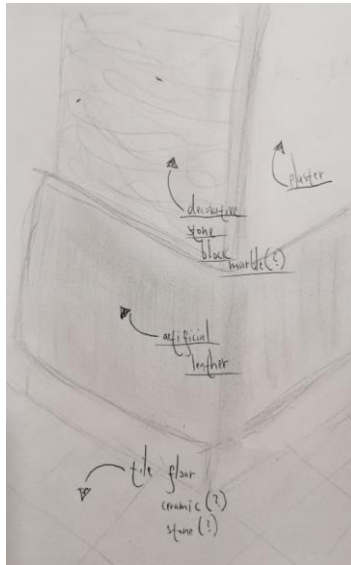


Fig.16 Analysing Materials in Café Stein



Fig.10 Table



Fig.11 Chair



Fig.12 Artificial Leather Panels



Fig.13 Stairs



Fig.14 Glass Wall